

LYRA 2013

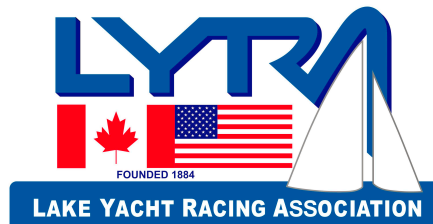
The 129th
Lake Yacht Racing Association
(LYRA) Annual Regatta
Day Series August 2-4 2013
National Yacht Club

Sponsored by

Redpath



porter



SAILING INSTRUCTIONS

1 RULES

- 1.1 The race will be governed by the rules as defined in *The Racing Rules of Sailing*.
- 1.2 The prescriptions of Sail Canada will apply.
- 1.3 PHRF Lake Ontario (PHRF-LO) rules will apply to all boats racing under the PHRF handicap rating system.
- 1.4 IRC 2013 Rules Parts A, B & C will apply to all boats racing under the IRC handicap rating system.
- 1.6 Class association rules will apply to boats that are racing in a one-design class.

2 NOTICES TO COMPETITORS

Notices to competitors will be posted on the official notice board located in the Chart Room on the ground floor of the National Yacht Club.

3 CHANGES TO SAILING INSTRUCTIONS

Any change to the sailing instructions will be posted before 0900h on the day that it takes effect, except any change to the schedule of races will be posted before 2000h on the day before it is to take effect.

4 SIGNALS MADE ASHORE

- 4.1 Signals made ashore will be displayed on the flagpole of the National Yacht Club.
- 4.2 When flag AP is displayed ashore, '1 minute' is replaced with 'not less than 30 minutes' in the race signal AP.

5 SCHEDULE

- 5.1 Dates of races:

Class	Friday, August 2	Saturday, August 3	Sunday, August 4
IRC	Racing	Racing	Racing
PHRF (Flying sail)	Racing	Racing	Racing
PHRF (No flying sail)	Not racing	Racing	Racing
8 Metre	Racing	Racing	Racing
Beneteau First 36.7	Racing	Racing	Racing
J/105	Racing	Racing	Racing
Melges 24	Not racing	Racing	Racing
Olson 30	Racing	Racing	Racing

R	Racing	Racing	Racing
---	--------	--------	--------

5.2 Number of races:

Class	Number	Races per day
IRC	9	3
PHRF (Flying sail)	9	3
PHRF (No flying sail)	6	3
8 Metre	6	2
Beneteau First 36.7	9	3
J/105	9	3
Melges 24	6	3
Olson 30	9	3
R	9	3

5.4 The scheduled time of the first warning signal is 1100h on Friday, August 2 and Saturday, August 3, and 1000h on Sunday, August 4.

5.5 No warning signal shall be made after 1530h on Friday, August 2 and Saturday, August 3, or after 1400h on Sunday, August 4.

6 CLASS FLAGS

Class flags will be:

Alpha Course

Class	Flag
8 Metre	Numeral pennant 1
Beneteau First 36.7	Numeral pennant 2
J/105	Numeral pennant 3

Bravo Course

Class	Flag
IRC I	Numeral pennant 1
IRC II	Numeral pennant 2
IRC III	Numeral pennant 3
IRC IV	Numeral pennant 4

Charlie Course

Class	Flag
-------	------

PHRF I (Flying sails)	Numeral pennant 1
PHRF II (Flying sails)	Numeral pennant 2
PHRF III (No flying sails)	Numeral pennant 3
PHRF IV (No flying sails)	Numeral pennant 4

Delta Course

Class	Flag
Melges 24	Numeral pennant 1
Olson 30	Numeral pennant 2
R	Numeral pennant 3

7 RACING AREAS

Appendix A shows the approximate locations of the racing areas.

Race Course	Centered on
Alpha	1.5 nm from Centennial Pier at 180° magnetic
Bravo	1 nm from Gibraltar (TE18) at 210° magnetic
Charlie	2 nm from Dufferin (T) at 210° magnetic
Delta	2 nm from Dufferin (T) at 250° magnetic

8 THE COURSES

- 8.1 The courses will be windward-leewards, sailed twice around, with a weather mark and offset mark, a leeward gate, and a downwind finish. The distance to the weather mark for the 8 Metre class will longer than for other classes on the same race course.
- 8.2 The diagram in Appendix B show the course, including the approximate angles between legs, the order in which marks are to be passed, and the side on which each mark is to be left.
- 8.3 At the gate marks 2S and 2P, boats shall sail between the gate marks from the direction of the previous mark and round either gate mark.
- 8.4 No later than the warning signal, the race committee signal boat will display the approximate compass bearing of the first leg.

9 MARKS

- 9.1 Marks 1, 1a, 2S, and 2P will be orange inflatable marks. Marks 1* and 1a* on Alpha course will be red inflatable marks.
- 9.2 New marks, as provided in instruction 11, will be yellow inflatable marks.
- 9.3 The start mark will be a green inflatable mark.
- 9.4 The finish mark will be a red inflatable mark.

10 THE START

- 10.1 The starting line will be between a mast or staff displaying an orange flag on the signal boat at the starboard end and the start mark at the port end.
- 10.2 Boats whose warning signal has not been made shall avoid the starting area during the starting sequence for other divisions.
- 10.3 If any part of a boat's hull, crew or equipment is on the course side of the starting line at her starting signal and she is identified, the race committee may attempt to broadcast her sail number on the applicable VHF channel for the race circle as provided in instruction 20.2. Failure to make or hear such a broadcast or its timing will not be grounds for a request for redress. This changes rule 62.1(a).
- 10.4 A boat starting later than 10 minutes after her starting signal will be scored Did Not Start without a hearing. This changes rule A4.

11 CHANGE OF THE NEXT LEG OF THE COURSE

- 11.1 To change the next leg of the course, the race committee will lay a new mark (or move the finish line) and remove the original mark as soon as practicable. When in a subsequent change a new mark is replaced, it will be replaced by an original mark.
- 11.2 In the event of a change of the next leg of the course, marks 1a, 1* and 1a* will not be relocated. All divisions shall round the new mark 1, leaving it to port.

12 THE FINISH

The finish line will be between a mast or staff flying an orange flag on the signal boat and the adjacent finish mark.

13 PENALTY SYSTEM

- 13.1 The first two sentences of rule 44.1 are changed to: "A boat may take a One-Turn Penalty when she may have broken a rule of Part 2 or rule 31 while racing. However, when she may have broken a rule of Part 2 while in the zone around a mark other than a starting mark, her penalty shall be a Two-Turns Penalty."
- 13.2 After a race, a boat that may have broken a rule of Part 2 or rule 31 while racing may take a Post-Race Penalty for that incident. The penalty shall be a Scoring Penalty, calculated as stated in rule 44.3(c). However, rules 44.1(a) and (b) apply. A boat takes a Post-Race Penalty by informing the race committee in writing and identifying the race number and when and where the incident occurred.
- 13.3 The Post-Race Penalty shall be:
 - (a) 20%, if taken before the protest time limit, or
 - (b) 30%, if taken after the protest time limit but before the beginning of a

hearing involving the incident.

14 TIME LIMIT

14.1 If no boat has passed Mark 1 within 30 minutes the race will be abandoned. Failure to meet the target time will not be grounds for redress. This changes rule 62.1(a).

14.2 Boats failing to finish within 20 minutes after the first boat sails the course and finishes will be scored Did Not Finish without a hearing. This changes rules 35, A4 and A5.

15 PROTESTS, REQUESTS FOR REDRESS, AND ARBITRATION

15.1 Protest forms are available at Officer of the Day station, located on the ground floor of the National Yacht Club. Protests and requests for redress or reopening shall be delivered there within the appropriate time limit.

15.2 The protest time limit is 90 minutes after the signal boat for the race course on which the filing boat raced has docked.

15.3 Notices will be posted no later than 30 minutes after the protest time limit to inform competitors of hearings in which they are parties or named as witnesses. Hearings will be held in the protest room, located in the boardroom of the National Yacht Club, immediately thereafter.

15.4 Notices of protests by the race committee or protest committee will be posted to inform boats under rule 61.1(b).

15.5 Breaches of instructions 10.2, 17 and 20.1 will not be grounds for a protest by a boat. This changes rule 60.1(a). Penalties for these breaches may be less than disqualification if the protest committee so decides.

15.6 An arbitration meeting may be held immediately after protests are filed for each incident resulting in a protest by a boat involving a rule of Part 2 or rule 31, but only if each party is represented by a person who was on board at the time of the incident. No witnesses will be permitted. However, if the arbitrator decides that rule 44.1(b) may apply or that arbitration is not appropriate, the meeting will not be held, and if a meeting is in progress, it will be closed.

15.7 Based on the evidence given by the representatives, the arbitrator will offer an opinion as to what the protest committee is likely to decide:

- (a) the protest is invalid,
- (b) no boat will be penalized for breaking a rule, or
- (c) one or more boats will be penalized for breaking a rule, identifying the boats and the penalties.

15.8 A boat that may have broken a rule may take a Post-Race Penalty as provided in 13.3, above. However, the penalty in 13.3(a) is available only until the protest time limit. During a meeting, a boat may take a penalty by acknowledging her acceptance of the

penalty in writing.

- 15.9 If a boat asks to withdraw her protest, the arbitrator may act on behalf of the protest committee in accordance with rule 63.1 to accept the withdrawal.

16 SCORING

- 16.1 The Low Point System of Appendix A will apply, modified as follows. In all classes except the J/105 class:

(a) When fewer than six (6) races have been completed, a boat's series score will be the total of her race scores.

(b) When six (6) or more races have been completed, a boat's series score will be the total of her race scores excluding her worst score.

- 16.2 In the J/105 class, a boat's series score will be the total of her race scores.

- 16.3 In PHRF and IRC, overall winners will be decided by comparing the average corrected time per mile for all races completed, for the winners of each division. The division-winning boat with the lowest combined corrected seconds per mile will be the overall winner for the fleet.

17 SAFETY REGULATIONS

- 17.1 Boats shall check in with the race committee by sailing on starboard tack past the stern of the race committee boat before the preparatory signal of its first race of each day and hailing its sail number until acknowledged by the race committee.
- 17.2 A boat that retires from a race shall notify the race committee as soon as possible on the applicable VHF channel for the race circle, as provided in instruction 20.2.

18 ADVERTISING

Boats will be required to display bow stickers provided by the regatta organizers.

19 HAUL-OUT RESTRICTIONS

Boats shall not be hauled out during the regatta except with and according to the terms of prior written permission of the race committee.

20 RADIO COMMUNICATION

- 20.1 Except in an emergency, a boat shall neither make radio transmissions while racing nor receive radio communications not available to all boats. This restriction also applies to mobile telephones.
- 20.2 The race committee will be monitoring the following VHF channels by race course:

Race Course	VHF Channel
Alpha	9
Bravo	72

Charlie	73
Delta	11

21 PRIZES

- 21.1 Flags will be presented to the boats placing first, second and third in each division.
 21.2 LYRA perpetual trophies will be presented for competition in the day series, for:

IRC overall
 PHRF overall
 Classic 8 Metre
 Modern 8 Metre
 Beneteau First 36.7
 J/105
 Olson 30
 Melges 24
 R Class

22 LYRA CHAMPIONSHIP

- 22.1 The following perpetual trophies will be awarded to the LYRA Regatta Champions:

IRC LYRA Regatta Champion - Bamaan Trophy
 PHRF LYRA Regatta Champion - Lake Ontario PHRF Trophy
 One-design LYRA Regatta Champion - Kay Heron Trophy

- 22.2 To qualify for the LYRA Regatta Championship in the IRC, PHRF or one-design fleets, a boat must compete in the day series, the Freeman Cup race, and one of the Centennial Cup or Founders' Cup races. A boat must compete in the same fleet for all races. Scoring for the LYRA Regatta Championship will use the CHIPS 3 high-point scoring system. For more information on CHIPS, see <http://tinyurl.com/AboutCHIPS>

- 22.3 The weighting of races will be as follows:

Race	Weighting
Centennial Cup or Founders' Cup race	0.5
Freeman Cup race	1.0
Day series	2.5

For the Day series, a boat's average high-point score per completed race will be used. If six or more races have been completed by a boat's division, the boat's worst score will be excluded.

- 22.4 The boats with the highest combined scores in these races in the IRC, PHRF and One-Design fleets will be awarded the Regatta Champions prizes above. The LYRA Executive Committee reserves the right not to award one or more of the Regatta Championship awards if, in its opinion, the performance of the boat with the highest score is not commensurate with the “best in fleet” spirit of the awards. This decision will not be grounds for redress.

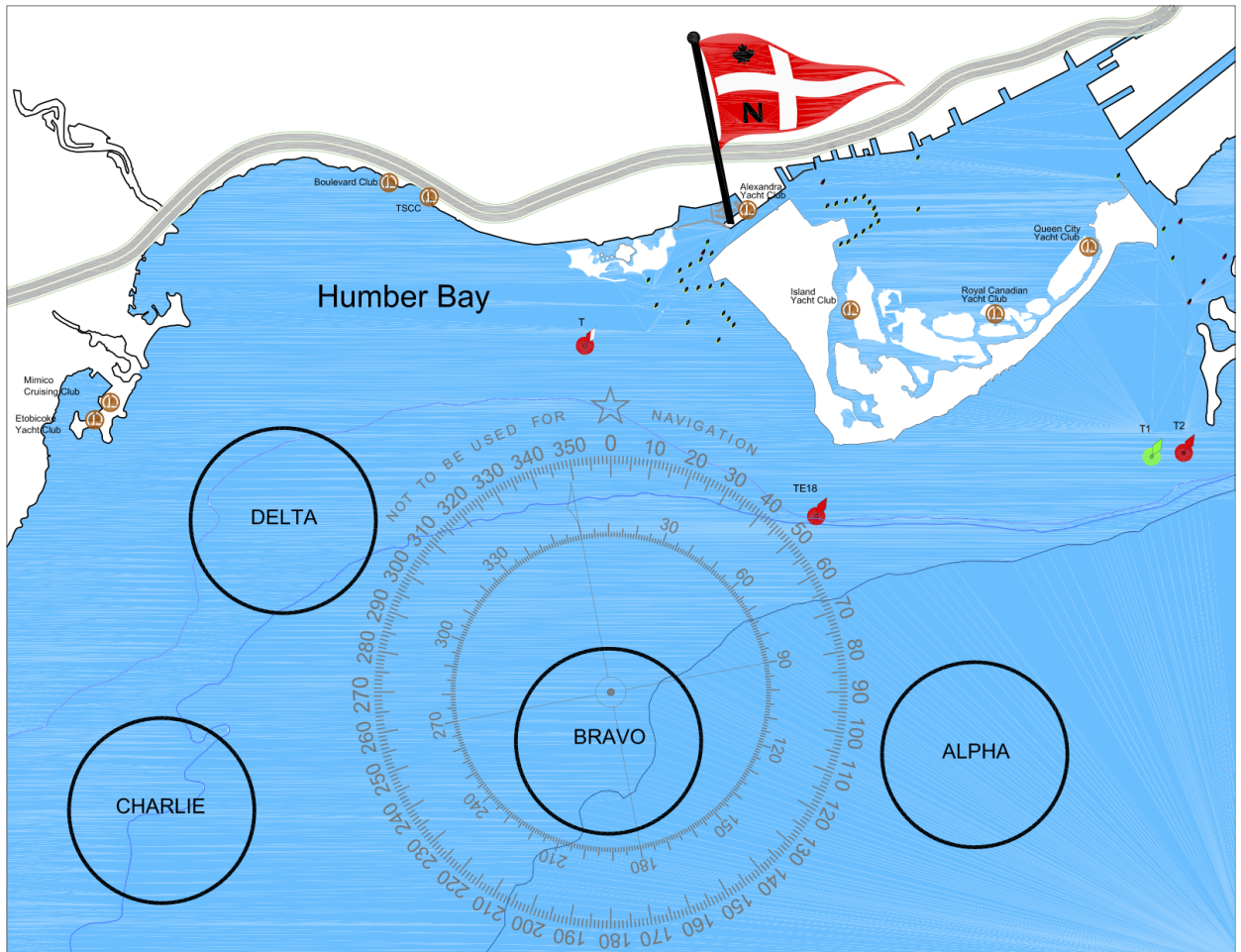
23 DISCLAIMER OF LIABILITY

- 23.1 Competitors participate in the race entirely at their own risk. See rule 4, Decision to Race. LYRA and the organizing authority, the National Yacht Club, will not accept any liability for material damage or personal injury or death sustained in conjunction with or prior to, during, or after the race.
- 23.2 As a condition of entry, each owner or charterer and individual participating crew shall sign a liability waiver and media release. The fully executive liability waiver form shall be submitted prior to racing. The liability waiver form will be posted on the regatta website and will be available at registration. By participating in this event, each competitor agrees to release LYRA and the National Yacht Club, among others, from any and all liability associated with participating in this event.

24 INSURANCE

Each participating boat shall be insured with valid third-party liability insurance with a minimum coverage of \$300,000 CAD per incident or the equivalent.

Appendix A



Appendix B

